

AMERICAN *cheer*

TRYOUT PACKET 2023-2024

EVALUATIONS
THURSDAY
MAY 11TH
2023

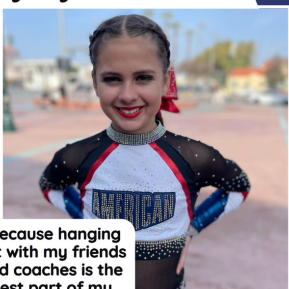


SQUAD PLACEMENT

SQUAD PLACEMENT AT TRYOUTS IS CRUCIAL TO OUR PROGRAM'S SUCCESS. WE AIM TO EVALUATE EACH ATHLETE AND PLACE THEM ON THE TEAM THAT WILL SUPPORT THEIR GROWTH AND MAXIMIZE OUR CHANCES OF SUCCESS DURING COMPETITION SEASON. NO EXPERIENCE IS NEEDED FOR OUR AMERICAN CHEER PROGRAM. WE PLACE ATHLETES ON TEAMS FROM AGES FOUR TO EIGHTEEN AND ALL ATHLETES MAKE A SQUAD. SQUAD PLACEMENTS ARE BASED ON THE RUBRIC WITH EXCEPTIONS (DON'T COUNT ON YOUR ATHLETE BEING THE EXCEPTION). ALL-STAR CHEERLEADING HAS MULTIPLE LEVELS THAT INCREASE WITH DIFFICULTY BASED ON SKILLS. HOWEVER PLEASE KEEP IN MIND THAT THERE IS A HIGHER EMPHASIS ON PROFICIENT EXECUTION RATHER THAN HIGHER DIFFICULTY.

Level	Standing Tumbling	Running Tumbling	Jumps
All-Star Prep and All-Star Novice	No experience necessary	No experience necessary	No experience necessary
All-Star Elite Level 1 Skills	<ul style="list-style-type: none"> • Series back walkovers • Front walkover • Back walkover switch leg 	<ul style="list-style-type: none"> • Front walkover- cartwheel-back walkover 	<ul style="list-style-type: none"> • Two connected jumps
All-Star Elite Level 2 Skills	<ul style="list-style-type: none"> • Back walkover back handspring • Switch leg backwalk over • Back handspring step-out 	<ul style="list-style-type: none"> • Round off 2 back-handsprings • Front walkover, round off, back handspring 	<ul style="list-style-type: none"> • Two connected jumps
All-Star Elite Level 3 Skills	<ul style="list-style-type: none"> • Standing three back handsprings • Back handspring step-out into series back handsprings • Back walkover into series back handsprings 	<ul style="list-style-type: none"> • Back handspring tuck • Front walkover, round off, back handspring tuck 	<ul style="list-style-type: none"> • Multiple jumps connected into standing multiple back handsprings • Two back handsprings, toe touch into a back handspring(s)
All-Star Elite Level 4 Skills	<ul style="list-style-type: none"> • Back handspring tuck • Two back handsprings to a tuck 	<ul style="list-style-type: none"> • Back handspring layout • Specialty level 4 pass to tuck (whip thru to tuck or punch front thru to tuck) 	<ul style="list-style-type: none"> • Toe touch- back handspring-back tuck
All-Star Elite Level 5 Skills	<ul style="list-style-type: none"> • Standing two back handsprings to a layout • Combo pass thru to layout (tumbling out of a tuck, whip thru pass, or a bounding pass) • 	<ul style="list-style-type: none"> • Round off- back handspring-full • Combo pass thru to fulls 	<ul style="list-style-type: none"> • Multiple jumps connected to a back tuck
All-Star Elite Level 6 Skills	<ul style="list-style-type: none"> • Standing two back handsprings to a full 	<ul style="list-style-type: none"> • Combo pass thru to fulls or double fulls (Front walkover, whip, or punch front thru to single/double full twisting layouts) 	<ul style="list-style-type: none"> • Multiple jumps connected to a back tuck Toe touch back handspring thru to full

Why do you love American Cheer?



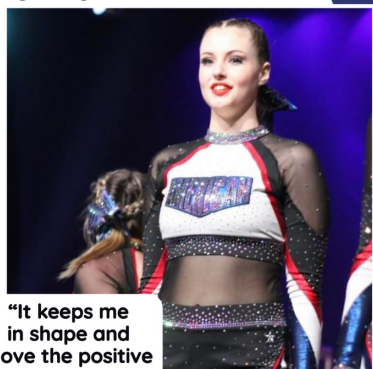
"Because hanging out with my friends and coaches is the best part of my week"

Olivia Hernandez

TEAM PLACEMENTS WILL BE EMAILED ON MAY 14TH AFTER 6 PM TO THOSE WITH COMPLETE FORMS AND CURRENT ACCOUNTS. IF NO EMAIL IS RECEIVED, THERE MAY BE MISSING OR UNRESOLVED REQUIREMENTS. SQUAD PLACEMENTS ARE **NOT** FINAL AND **WILL** CHANGE DURING THE SUMMER AS COACHES LEARN ABOUT EACH ATHLETE'S STRENGTHS AND WEAKNESSES



Why do you love American Cheer?



"It keeps me in shape and I love the positive environment"

Samantha Howard

AN ATHLETE'S DATE OF BIRTH MUST BE ON, OR BETWEEN, THE DATES LISTED TO BE ELIGIBLE FOR THE DIVISION. APPROXIMATE AGES ARE REFLECTIVE OF THE TYPICAL AGE RANGE ATHLETES ARE DURING THE BIRTH YEARS LISTED FOR EACH DIVISION. KEEP IN MIND THAT AN ATHLETE CAN BE OUTSIDE OF THE APPROXIMATE AGES AND STILL BE ELIGIBLE FOR A DIVISION. THE BIRTH YEAR IS WHAT IS USED FOR ELIGIBILITY.

All-Star Elite Divisions	Birth Year	Approximate Ages
Tiny All-Star Elite	2016-2018	Ages 6-7
Mini All-Star Elite	2014-2017	Ages 7-9
Youth All-Star Elite	2011-2016	Ages 8-12
Junior All-Star Elite	2008-2015	Ages 9-15
Senior All-Star Elite Levels 1-5	6/1/2003-2010	Ages 13-19
Senior All-star Elite Level 6	6/1/04-2011	Ages 14-19

All-Star Elite International Divisions	Birth Year	Approximate Ages
U16	2007-2012	12-16 years old
U18	2005-2010	14-18 years old

All-Star Prep Divisions	Birth Year	Approximate Ages
Tiny Novice	2016-2020	4-7 years old
Tiny All-Star Prep	2016-2018	6-7 years old
Mini All-Star Prep	2014-2017	7-9 years old

All-Star Prep Divisions	Birth Year	Approximate Ages
Youth All-Star Prep	2011-2016	8-12 years old
Junior All-Star Prep	2008-2015	9-15 years old
Senior All-Star Prep	6/1/04-2012	12-19 years old

ELITE TEAMS

ALL-STAR ELITE ATHLETES REQUIRE THE HIGHEST LEVEL OF COMMITMENT, INCLUDING REGULAR ATTENDANCE AT PRACTICES AND COMPETITIONS, MEETING FINANCIAL RESPONSIBILITIES, AND TRAVEL TO COMPETITIONS IN MULTIPLE STATES. IN THE PAST THE PROGRAM HAS TRAVEL TO LAS VEGAS, NV, DALLAS, TX, NASHVILLE, TN AND ORLANDO, FL. JUNIOR AND SENIOR TEAMS AT LEVELS TWO AND HIGHER MAY COMPETE AT "THE SUMMIT" IN ORLANDO, FL, WITH COSTS MET THROUGH FUNDRAISING AND JUMP BOOSTER CLUB.

PREP TEAMS

PREP SQUADS COMPETE MOSTLY AT LOCAL COMPETITIONS. WHILE THE HOURS ARE LOWER, SQUAD MEMBERS ARE EXPECTED TO BE AT ALL PRACTICES AND PERFORMANCES, AND UNDERSTAND THEY ARE MAKING A COMMITMENT TO COMPLETE THE WHOLE SEASON. THESE SQUADS WILL ONLY TRAVEL TO IN-STATE COMPETITIONS WITH THE POSSIBILITY OF ONE EVENT IN LAS VEGAS.



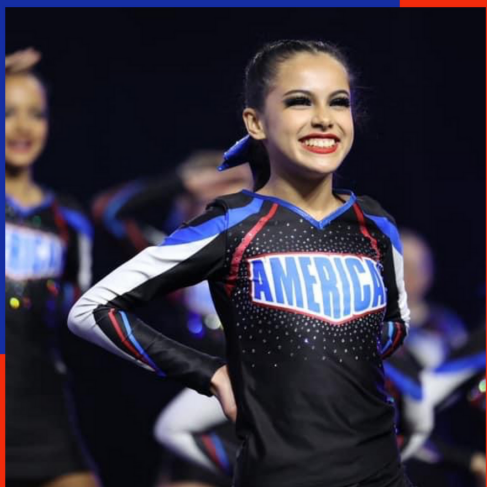
PRACTICES & SUMMER VACATIONS

THE SUMMER IS THE FOUNDATION OF OUR SEASON; PRODUCTIVE PRACTICES ARE A MUST FOR A SUCCESSFUL SEASON. PRACTICES ARE MANDATORY HOWEVER WE DO ENCOURAGE FAMILIES TO ENJOY VACATION TIME AND OTHER SUMMER ACTIVITIES. IF YOU ARE IN TOWN, WE EXPECT THAT YOU WILL BE AT PRACTICE. IF YOU'RE ON VACATION, ENJOY YOUR TIME AWAY!

THERE WILL BE NO PRACTICES ON THE FOLLOWING DAYS:

- MONDAY, MAY 29TH FOR MEMORIAL DAY
- THE WEEK OF JULY 3RD THRU JULY 9TH FOR INDEPENDENCE DAY
- MONDAY, SEPTEMBER 5TH FOR LABOR DAY
- TUESDAY, OCTOBER 31ST FOR HALLOWEEN
- THE WEEK OF THANKSGIVING, NOVEMBER 20TH-26TH
- DECEMBER 20TH - JANUARY 2ND (TWO WEEKS FOR CHRISTMAS BREAK AND NEW YEARS). ALL-STAR ELITE TEAMS WILL RETURN TO PRACTICE ON WEDNESDAY, JANUARY 3RD AND PRACTICE THROUGH THE WEEKEND (JANUARY 5TH, 6TH & 7TH)
- EASTER BREAK- MONDAY, MARCH 25TH- SUNDAY, MARCH 31ST- THIS IS SUBJECT TO CHANGE BASED ON THE COMPETITION SCHEDULE.
- DAYS CANCELED BY STAFF DUE TO COMPETITIONS, PERFORMANCES, SPECIAL EVENTS AT OUR FACILITIES, STAFF TRAINING, CLINICS, OR OTHER DAYS THAT THE STAFF DETERMINES MUST BE CANCELED.

PRACTICE ATTENDANCE



TO EXCEL AT COMPETITION, WE NEED CONSISTENT AND HIGH-QUALITY PRACTICES. HIGH-QUALITY PRACTICES REQUIRE MAXIMUM ATTENDANCE. ONLY A FEW ABSENCES ARE EXCUSED, SUCH AS CONTAGIOUS ILLNESSES WITH A DOCTOR'S NOTE, SCHOOL GRADED EVENTS, AND FAMILY EMERGENCIES. DUE TO THE RELUCTANCE OF SOME OF THE LOCAL HIGH SCHOOLS TO SHARE COMMON ATHLETES, HIGH SCHOOL CHEERLEADERS WILL NO LONGER BE PLACED ON AMERICAN CHEER TEAMS UNLESS THERE IS AN AGREEMENT BETWEEN THE AMERICAN CHEER DIRECTOR AND THE HIGH SCHOOL, BENEFICIAL TO BOTH PARTIES.

UNEXCUSED MISSED PRACTICES INCUR A \$100 FEE. ATHLETES MISSING THE WEEK OF A COMPETITION WILL BE REPLACED AND CHARGED A \$250 RE-CHOREOGRAPHY FEE. MISSING AN EXTRA PRACTICE OR CHOREOGRAPHY

SESSION RESULTS IN A \$250 FEE. THE SEASON CALENDAR IS RELEASED WELL IN ADVANCE FOR FAMILIES TO PLAN. THE TEAM'S SUCCESS RELIES ON EVERYONE'S PARTICIPATION. MISSED PRACTICE FEES ARE NOT ENFORCED UNTIL SCHOOL RESUMES IN AUGUST. PLANNED ABSENCES REQUIRE TWO WEEKS' NOTICE, WHILE UNPLANNED ABSENCES SHOULD BE COMMUNICATED TO THE CHEER DIRECTOR VIA EMAIL (JASON@AKSC.COM).

CLOSED PRACTICES

FOR A MORE FOCUSED PRACTICED ENVIRONMENT WITH LESS OUTSIDE DISTRACTIONS, SELECT PRACTICES WILL BE CLOSED, CHOREOGRAPHY SESSIONS, EXTRA PRACTICES, AND THE WEEK OF COMPETITION.

LIKELY EXTRA PRACTICES

WE TRY OUR BEST TO KEEP EXTRA PRACTICES TO A MINIMUM, HOWEVER, TO PUT TEAMS IN THE BEST POSITION FOR SUCCESS EXTRA PRACTICES WILL OCCUR. AFTER THE COMPETITION SCHEDULE HAS BEEN SET, THE SEASON CALENDAR WILL BE RELEASED WHICH WILL INFORM YOU OF ALL CHEER RELATED EVENTS.

VACATION REQUEST

WE ARE NO LONGER DOING THE PAPER VACATION REQUEST FORMS, PLEASE EMAIL YOUR SUMMER VACATION REQUEST TO JASON@AKSC.COM BY THE THIRD WEEK IN JUNE



TENTATIVE CHOREOGRAPHY DATES

- STUNT CAMP- JULY 10TH-12TH
- STUNT CHOREOGRAPHY- JULY 12TH-13TH
- PYRAMID CHOREOGRAPHY- JULY 27TH AND 28TH
- ROUTINE CHOREOGRAPHY- AUGUST 4TH - 13TH & SEPTEMBER 7TH - SEPTEMBER 11TH

DROPPING FROM THE PROGRAM

THERE IS A \$500 CANCELLATION FEE FOR ANY CHILD THAT QUILTS, IS REMOVED OR DOES NOT FOLLOW THE RULES AND GUIDELINES OF OUR PROGRAM ANYTIME BETWEEN AUGUST 1, 2023, TO THE END OF THE COMPETITION SEASON (MAY 5, 2024), WITH NO REFUNDS OF ANY TUITION, PRACTICE WEAR, UNIFORM OR JUMP S.O. FEES. DROPS HAVE A HUGE NEGATIVE IMPACT ON THE OTHER SQUAD MEMBERS AND CREATE ADDITIONAL CHOREOGRAPHY EXPENSES AND EXTRA PRACTICE COST... YOU SHOULD JOIN ONLY WITH THE INTENT OF COMPLETING THE SEASON. LASTLY, A 30-DAY NOTICE IS ALSO REQUIRED FOR A MEMBER TO DROP, INCLUDING THE END OF THE SEASON, AND MUST BE SUBMITTED VIA THE PARENT PORTAL. TO AVOID THE CANCELLATION FEE, ONLINE DROPS MUST BE COMPLETED SO THAT THE AFFECTIVE DROP DATE IS PRIOR TO AUGUST 1ST, 2023. **NO DROPS ARE ALLOWED AFTER THE FIRST OF DECEMBER UNLESS APPROVED BY AN AKSC CORPORATE OFFICER.** DROPS DURING THIS TIME ARE EVEN MORE DAMAGING TO THE HARD WORK AND RESOURCES EVERYONE HAS INVESTED. ATHLETES THAT STOP ATTENDING AFTER THIS POINT MUST STILL PAY ALL REMAINING SEASON TUITION AND ALL OTHER EXPENSES



COMMUNICATION

OUR OFFICIAL WAY OF COMMUNICATION IS VIA EMAIL. THAT'S FROM US TO FAMILIES AND FAMILIES TO CHEER DEPARTMENT. ALL OTHER FORMS OF COMMUNICATION ARE SECONDARY (FACEBOOK, REMIND, SMOKE SIGNALS).

- CHEER DIRECTOR- JASON LARKINS, JASON@AKSC.COM
- CHEER MANAGER- ASHLEY LARKINS, ASHLEY@AKSC.COM
- ASSISTANT TO THE CHEER MANAGER- SHEILA@AKSC.COM
- ACCOUNTS MANAGER- TONIA ACRES- TONIA@AKSC.COM



TUITION & ANNUAL CHEER MEMBERSHIP FEE

NOT COVERED IN THIS SECTION: UNIFORM, PRACTICE WEAR, AND COMPETITION COSTS

MONTHLY TUITION COVERS SQUAD PRACTICES MAY-APRIL.

Programs Offered	Session Tuition	Cheer Membership Fee
All-Star Prep Squads	\$176	\$159
All-Star Elite Tiny & Mini Squads	\$229	\$249
All-Star Elite Youth, Jr & Sr Squads	\$261	\$249

*SESSIONS ARE 4 WEEKS

** PRICES ABOVE REFLECT AUTO-PAY RATES

*** CHEER MEMBERSHIP FEE IS CHARGED AT THE BEGINNING OF EVERYONE'S SEASON ON MAY 20TH (OR WHEN FIRST ENROLLING).

****IF YOU ARE UNABLE/UNWILLING TO PAY TUITION USING OUR AUTO-PAY SYSTEM, THERE WILL BE A \$10 HANDLING FEE ADDED TO YOUR TUITION RATE.

METHODS OF PAYMENT & DISCOUNTS

TUITION COVERS A 4-WEEK SESSION AND THERE ARE 12 SESSIONS. YOU ARE NOT BEING CHARGED FOR THE FOUR WEEKS WE ARE CLOSED DURING EASTER, THANKSGIVING, AND CHRISTMAS.

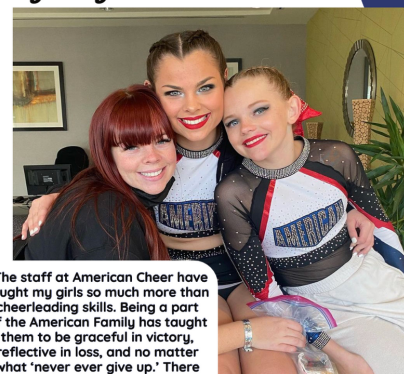
AUTO-PAY: WE REQUIRE ALL SQUAD MEMBERS TO USE OUR AUTOMATIC PAYMENT SYSTEM WHEN CREATING YOUR ACCOUNT. A CREDIT CARD ON FILE IS REQUIRED. WE RUN ALL TRANSACTIONS ON THE 20TH OF THE MONTH PRECEDING THE NEXT SESSION. TRANSACTIONS WILL TYPICALLY CLEAR YOUR ACCOUNT A DAY OR SO AFTER (IF THE 20TH FALLS ON A WEEKEND, THE ACCOUNT IS CHARGED ON THE FOLLOWING WORKDAY).

PAY-IN-PERSON: TO PAY IN PERSON YOU MUST SIMPLY DO IT BEFORE THE 20TH OF THE MONTH PRECEDING THE NEXT SESSION, OTHERWISE IT WILL BE PROCESSED WITH AUTO-PAY.

MULTIPLE CHILDREN: A 20% DISCOUNT IS GIVEN TO FAMILIES WITH MORE THAN ONE CHILD IN ANY AKSC PROGRAM. YOU PAY 100% OF THE 1ST TUITION (HIGHEST) AND RECEIVE THE DISCOUNT ON ALL ADDITIONAL TUITIONS (EXCLUDING CHEER TUMBLING CLASSES, HYPER-FLEX CLASSES, BARGAIN CLASSES, AND AKU)

LATE FEES: IF TUITION IS NOT PAID BY THE 20TH OF THE MONTH PRECEDING THE NEXT SESSION, YOU WILL BE ASSESSED A \$25 LATE FEE. IF YOUR ACCOUNT IS PAST DUE ON THE FIRST DAY OF THE SESSION YOUR CHILD(REN) WILL NOT BE ALLOWED TO PARTICIPATE IN PRACTICE OR COMPETITION. WE ARE ALWAYS OPEN TO HELPING YOU, SO IF YOU SEE A PROBLEM PAYING, CALL/EMAIL OUR ACCOUNT MANAGER TONIA AT TONIA@AKSC.COM. TONIA DOES HER BEST TO WORK WITH YOU TO FIND WORKABLE PAYMENT ARRANGEMENTS.

Why do you love American Cheer?



"The staff at American Cheer have taught my girls so much more than cheerleading skills. Being a part of the American Family has taught them to be graceful in victory, reflective in loss, and no matter what 'never ever give up.' There is no doubt in my mind that the lessons my girls have learned from their coaches will be carried with them throughout their lives."

- Corri Raub



UNIFORMS

TOP, SKIRT, LINER, COMP BOW, AND WARM-UP JACKET

ALL ATHLETES, WHETHER RETURNING OR NEW TO OUR PROGRAM SHOULD LOOK AT THE PRICES BELOW. SAVE MONEY BY PAYING IN FULL EARLY. INDIVIDUAL ORDERS MADE AFTER OUR BULK ORDER WILL COST MORE. (PRICES SUBJECT TO CHANGE)

	Super Saver	Still Save	Pay Over Time
Tax Included	Paid in Full (May 17)	Paid in Full (June 20)	50% June 20 & September 20
All-Star Prep (No Jacket**)	\$322.00	\$354.00	\$195 x 2
All-Star Elite Girls	\$750.00	\$806.00	\$433 x 2
All-Star Elite Boys	\$625.00	\$675.00	\$360 x 2
Jacket ONLY	\$150.00	\$163.00	NA

*NON-REFUNDABLE ONCE PAID.

**PREP SQUADS MAY CHOOSE TO PURCHASE JACKET BUT IT IS NOT REQUIRED. (\$150)

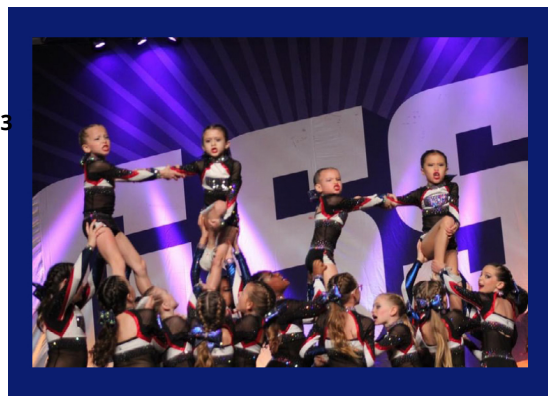
*** ALL-STAR ELITE DAY 1 COMPETITION BOW \$30 DUE OCTOBER 20TH, 2023

****ALL-STAR ELITE DAY 2 COMPETITION BOW \$30 DUE SEPTEMBER 20TH, 2023

*****ALL-STAR PREP COMPETITION BOW \$25 DUE OCTOBER 20TH, 2023

SHOES & PRACTICE WEAR

(Prices subject to change)



Tax included	Practice Wear If paid by May 16	Practice Wear If paid by June 16
All-Star Prep	\$195	\$213
All-Star Elite Girls	\$265	\$283
All-Star Elite Boys	\$198	\$216

CHEER SHOES ARE REQUIRED, AND WE DO CARRY THE LARGEST INVENTORY IN KERN COUNTY, BUT YOU MAY BUY ANY BRAND FROM ANYONE YOU LIKE. WE SUGGEST HAVING A PRACTICE PAIR AND A COMPETITION PAIR SO THEY LOOK GREAT ON STAGE... BUT THAT IS ONLY A SUGGESTION.

PRACTICE WEAR INSTILLS AND REINFORCES UNITY, TEAMWORK, AND DISCIPLINE IN OUR PROGRAM AND IS REQUIRED AT ALL PRACTICES. ATHLETES NOT IN DESIGNATED PRACTICE WEAR WILL BE SAT OUT OF PRACTICE. ALL ATHLETES RECEIVE PRACTICE TOPS AND SPORTS BRAS (THE AMOUNTS DIFFER BASED ON PREP VS ELITE). MORE THAN ONE SET MAY BE ORDERED AND ATHLETES MAY PURCHASE THEIR OWN BOTTOMS.

- ALL-STAR PREP- TWO SPORTS BRAS, ONE SHIRT, ONE SHORT, ONE HAIR BOW
- ELITE GIRLS - TWO SPORTS BRAS, ONE SKIRT, ONE SHORT, TWO SHIRTS, ONE HAIR BOW
- BOYS - TWO TANKS, ONE SHIRT AND TWO SHORTS



TEAM FEES

(FORMERLY SPONSORSHIP OBLIGATION)

THE TEAM FEE IS HOW WE PAY FOR NON-TRAINING EXPENSES. THOSE EXPENSES PRIMARILY INVOLVE COSTS ASSOCIATED WITH ATTENDING COMPETITIONS SUCH AS COMPETITION ENTRY FEES, STAFF WAGES/EXPENSES FOR COMPETITIONS, CLUB NATIONAL/STATE MEMBERSHIP FEES, BUT ALSO COACHES EDUCATION, END OF SEASON BANQUET & AWARDS AND OTHER INCIDENTALS. YOU CAN PAY THE TF DIRECTLY AND/OR YOU MAY FUNDRAISE THE FEE THROUGH THE USE OF OUR NON-PROFIT WE CALL JUMP.

TF VARIES BASED ON LEVEL. YOU ARE REQUIRED TO CONTRIBUTE YOUR TEAM FEE ON A MONTHLY BASIS TYPICALLY STARTING IN JUNE AND ENDING IN DECEMBER/JANUARY IN AMOUNTS SET BY AKSC SO THAT THE FUNDS WE NEED TO REGISTER FOR COMPETITIONS MONTHS IN ADVANCE ARE AVAILABLE WHEN NEEDED. THIS GIVES YOU TIME TO FUNDRAISE! ANYTHING YOU RAISE MORE THAN THE MINIMUM IS HELD FOR YOUR FUTURE BENEFIT. SEE CHART BELOW.

Due Date	All-Star Prep	All-Star Elite	Summit Eligible Teams
May 20th (enrollment date)	\$100	\$100	\$100
July 5th	\$132	\$242	\$264
August 5th	\$132	\$242	\$264
September 5th	\$132	\$242	\$264
October 5th	\$132	\$242	\$264
November 5th	\$132	\$242	\$264
December 5th	\$132	\$242	\$264
January 5th	-	-	\$264
Total (est)	\$892	\$1552	\$1948
Paid in Full (Save 3%) *cash check only*	\$865.24*	\$1505.44*	\$1889.56*

ON THE 5TH OF EACH MONTH AKSC WILL COLLECT THE AMOUNTS IN THE ABOVE TABLE WHICH HAVE NOT YET BEEN PAID THRU A JUMP FUNDRAISER (IF YOU FUNDRAISED). IF YOU HAVE ALREADY MET THE AMOUNT IN PART BY FUNDRAISING, AKSC WILL ONLY COLLECT THE NET AMOUNT STILL DUE IF ANY. IF YOU ARE AHEAD OR PAID IN FULL THEN NOTHING IS COLLECTED THAT MONTH. THIS IS DONE BY USING YOUR CREDIT/DEBIT CARD ON FILE ON YOUR AKSC ACCOUNT THAT YOU HAVE AUTHORIZED. IF YOU DO NOT WISH TO HAVE AKSC USE THE REQUIRED CARD ON FILE SIMPLY PAY THE FEE BEFORE THE 5TH BY CHECK OR CASH.

ABOVE IS A "PRESEASON ESTIMATE" BASED ON LAST YEAR. ONCE WE KNOW HOW MANY SQUAD MEMBERS WE HAVE, THE CHEER DIRECTOR WILL DETERMINE A FINAL COMPETITION SCHEDULE AND BASED ON THE OFFICIAL COMPETITION SCHEDULE, AND THE FEES FOR THOSE EVENTS, WE WILL FINALIZE THE TF. IT IS OUR GOAL TO STAY NEAR THE LISTED ESTIMATIONS. THESE FIGURES ARE FOR THE WHOLE SEASON AND AGAIN, ARE PRESEASON ESTIMATES BASED ON LAST YEAR'S SEASON. SUBJECT TO CHANGE BASED ON ACTUAL ENTRY FEES





BOOSTER CLUB

JUMP IS OUR NON-PROFIT 501-C-3 BOOSTER CLUB THAT HELPS FAMILIES RAISE FUNDS FOR THE COMPETITIVE ATHLETES OF AKSC. THE CLUB IS RUN ENTIRELY BY VOLUNTEERS. FUNDRAISING IS OPTIONAL, BUT IT IS AN EXCELLENT WAY TO PAY FOR YOUR ATHLETE(S) TF AND REQUIRED UNIFORMS FOR COMPETITIONS. TO FUNDRAISE, YOU MUST SET UP AN ACCOUNT ON JUMP'S ICLASS ACCOUNT. ANY MONEY YOU RAISE WILL GO TOWARD YOUR FAMILY'S BENEFIT, SPECIFICALLY FOR TF AND UNIFORMS (NOT TUITION). IF YOU HAVE ANY CREDIT IN JUMP, AKSC WILL MOVE IT OVER TO YOUR ACCOUNT AND ONLY COLLECT FOR ANY REMAINING BALANCE. ANY EXTRA FUNDS RAISED WILL BE HELD IN JUMP FOR YOUR FUTURE BENEFIT, AND YOU WILL ONLY LOSE THAT BENEFIT IF YOU QUIT ALL AKSC COMPETITIVE PROGRAMS. IF YOU MOVE UP TO A COMPETITIVE LEVEL WITH HIGHER TF REQUIREMENTS, ANY EXCESS FUNDRAISING OR DONATIONS WILL STILL BENEFIT YOU. PLEASE NOTE THAT TEAM UNIFORM FEES ARE NON-REFUNDABLE.

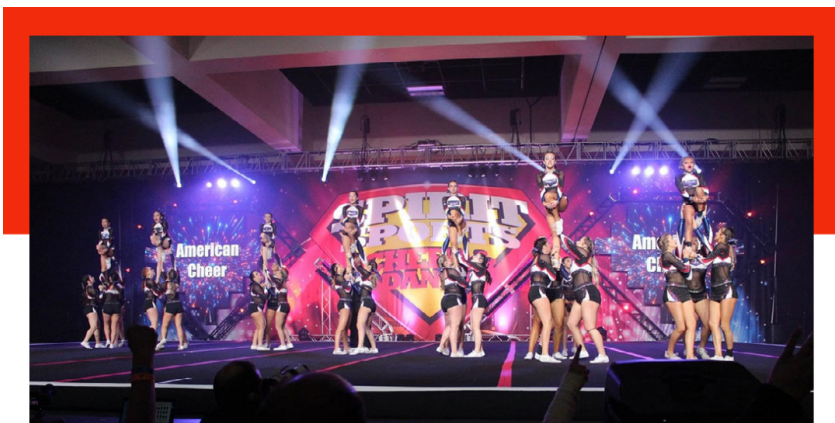
REGARDING FUNDRAISERS, JUMP COORDINATES VARIOUS FUNDRAISERS THAT CAN HELP FAMILIES MEET THEIR TF. MANY FAMILIES HAVE SUCCESSFULLY MET THEIR TF USING THESE FUNDRAISERS. YOU HAVE THE OPTION TO PARTICIPATE IN ALL, SOME, OR NONE OF THESE FUNDRAISERS. IF YOU CHOOSE NOT TO PARTICIPATE, YOU WILL BE RESPONSIBLE FOR PAYING THE FULL TF FOR YOUR SQUAD AS PER THE SCHEDULE PROVIDED. A PARENT MEETING WILL BE SCHEDULED SHORTLY AFTER TRYOUTS, WHERE FUNDRAISING WILL BE DISCUSSED IN MORE DETAIL. THE SPECIFIC DATES FOR THE MEETING ARE YET TO BE ANNOUNCED.

YOU MUST CREATE YOUR ACCOUNT WITH JUMP TO PARTICIPATE IN FUNDRAISERS. ON A COMPUTER, NOT YOUR PHONE, GO TO WWW.AKSC.COM AND CLICK THE TAB NEAR THE TOP ENTITLED "BOOSTER CLUB". SCROLL DOWN AND CLICK "CLICK HERE". CLICK ON "CLICK HERE TO BEGIN". THEN CLICK ON "CREATE ACCOUNT". IF YOU HAVE ANY DIFFICULTY EMAIL MALLARD@AKSC.COM AND SHE CAN HELP YOU.

RULES & POLICIES

AMERICAN KIDS SPORTS CENTER HAS A RULES & POLICY AGREEMENT FOR YOUR PARTICIPATION IN ANY OF OUR COMPETITIVE PROGRAMS AND FOR YOUR PARTICIPATION

WITH OUR BOOSTER CLUB JUMP. YOU CAN FIND THOSE RULES AND POLICIES ONLINE AT AKSC.COM UNDER "RULES AND POLICY AGREEMENT" ON THE CHEER PAGE.



THEY ARE THERE FOR YOUR BENEFIT AS THEY HELP CREATE AND MAINTAIN A HEALTHY & STRONG PROGRAM, AS WELL AS AN ENJOYABLE ATMOSPHERE. NOTE, BY JUST ENROLLING AT AKSC YOU ARE AGREEING TO THEM. IF YOU HAVE A QUESTION ABOUT ANY OF THE R & P, FEEL FREE TO EMAIL MICHELLE@AKSC.COM WITH YOUR QUESTIONS.



THE SKINNY ON AMERICAN CHEER

AMERICAN CHEER IS A 12-MONTH (MAY 2023-APRIL 2024) COMMITMENT.

ATHLETES AGES 4-18 AND OF ALL SKILL LEVELS ARE ACCEPTED AND PLACED ON SQUADS.

THERE ARE 3 DIFFERENT PROGRAMS THAT WE OFFER:

ALL STAR ELITE (YOUTH, JR AND SR), ALL STAR ELITE (TINY/MINI), AND ALL STAR PREP.
EACH TYPE HAS DIFFERRING TIME AND COST COMMITMENT LEVELS WITH ALL STAR ELITE
BEING THE HIGHEST COMMITMENT AND ALL STAR PREP BEING THE LOWEST.

PLEASE SEE THE FULL PACKET FOR COMPLETE COMMITMENT DETAILS.

PROGRAM COSTS

ALL STAR ELITE (Youth, Jr & Sr)

Tuition: 12 Payments of \$261 Monthly
Team Fee- Summit Eligible Teams: \$1948
Annually (broken into eight installments)
Team Fee- Non Summit Eligible Teams: \$1552
Annually (broken into seven installments)
AKSC Membership Fee: \$39 Annually
Cheer Membership Fee: \$249 Annually
Comp Uniform: \$625 (Boys), \$750 (Girls)*
Comp Bows: Day 1 \$30; Day 2 \$30
Practice Wear: \$265 (Girls)* \$198 (Boys)*

ALL STAR ELITE (Tiny & Mini)

Tuition: 12 Payments of \$229 Monthly
Team Fee: \$1552 Annually (broken into
seven installments)
AKSC Membership Fee: \$39 Annually
Cheer Membership Fee: \$249 Annually
Comp Uniform: \$625 (Boys), \$750 (Girls)*
Comp Bows: Day 1 \$30; Day 2 \$30
Practice Wear: \$265 (Girls)* \$198 (Boys)*

*All uniform and Practice Wear prices are based
on Super Saver Rates. See full packet for
additional payment options and due dates.

ALL STAR PREP

Tuition: 12 Payments of \$176 Monthly
Team Fee: \$892 Annually (broken
into seven installments)
AKSC Membership Fee: \$39
Annually
Cheer Membership Fee: \$159
Annually
Comp Uniform: \$322*
Comp Bow: \$30
Practice Wear: \$195*

IMPORTANT DATES

- ON THE **5TH** OF EACH MONTH, YOUR **TF** INSTALLMENT IS DUE.
- ON THE **20TH** OF EACH MONTH, YOUR **AKSC TUITION** IS DUE.

- **MAY 14TH**

TEAM PLACEMENTS GO OUT
AFTER 6PM

- **MAY 16TH**

SUPER SAVER RATE CUT OFF
FOR UNIFORM

SUPER SAVER RATE CUT OFF
FOR PRACTICE WEAR

- **JUNE 20TH**

EARLY BIRD RATE CUT-OFF FOR
UNIFORM OR 1ST PAYMENT ON
UNIFORM.

- **JULY 10TH-12TH**

STUNT CAMP

- **JULY 12TH AND 13TH**
STUNT CHOREOGRAPHY

- **JULY 27TH AND 28TH**
PYRAMID CHOREOGRAPHY

- **AUGUST 1ST**
SEASON COMMITMENT CUT-
OFF

***ATHLETES MAY NOT DROP AFTER 8/1/23
AT THIS POINT A DROP PENALTY WILL APPLY.

- **AUGUST 4TH-AUGUST
13TH**
ROUTINE CHOREOGRAPHY

- **SEPTEMBER 7TH-
SEPTEMBER 11TH**
ROUTINE CHOREOGRAPHY

- **SEPTEMBER 20TH**
2ND PAYMENT DUE FOR
UNIFORM INSTALLMENT

NOTES ABOUT COMPETITION

THE COMPETITION SEASON WILL BEGIN IN NOVEMBER
AND RUN THROUGH THE BEGINNING OF MAY. ALL STAR
ELITE SQUADS TYPICALLY COMPETE IN 7-9 COMPETITIONS
EACH SEASON AND ALL STAR PREP TYPICALLY COMPETES
IN 4-5 COMPETITIONS.

ALL STAR ELITE SQUADS CAN COMPETE AT STATE,
REGIONAL AND NATIONAL COMPETITIONS, POSSIBLY
TRAVELING TO NEVADA, ARIZONA, GEORGIA, NASHVILLE,
TEXAS OR FLORIDA.

ALL STAR ELITE SQUADS TYPICALLY COMPETE IN 2 DAY
COMPETITIONS THAT WILL NORMALLY REQUIRE OVERNIGHT
STAYS.

ALL STAR PREP SAUARDS COMPETE AT ONE DAY EVENTS
TYPICALLY WITHIN A REASONABLE DRIVING DISTANCE
[2-3 HOURS]. EVENTS DURING 2022-2023 SEASON
INCLUDED, BAKERSFIELD, POMONA, LONG BEACH AND
LAS VEGAS.



EVALUATION FORM

ALL NEW MEMBERS WISHING TO ENROLL INTO AMERICAN CHEER FOR THE COMING SEASON NEED TO COMPLETE THE TOP PORTION OF THIS FORM. INCOMPLETE FORMS OR FORMS WITHOUT PHOTOS WILL NOT BE ACCEPTED. BY TURNING IN A COMPLETED FORM, YOU ARE CONFIRMING THAT YOU ARE READY FOR YOUR ATHLETE(S) TO BE PLACED ON A TEAM(S) AND FOR YOUR ACCOUNT TO BE AUTOMATICALLY BILLED.

REQUIRED ITEMS/DOCUMENTS:

- Attach a 2"x3" Athlete Photo
- Online registration complete

Program Preference :

- ☐ Allstar Elite
- ☐ Allstar Prep

Willing to crossover:

☐ YES

Athlete's Birth YEAR: _____

Parent Email: _____

Contact #: _____

Participating in High School Cheer, if so, where?

Athlete's Name: _____

Category	Jumps	Standing Tumbling 1	Standing Tumbling 2	Jumps to Tumbling	Running Tumbling
Level 1 Prep	Toe Touch	Forward Roll	Backbend or Bridge Up	N/A	
Level 1 Elite	Double Jump	BWO BWO	BWO Switch Leg	N/A	FWO CW BWO
Level 2	Double Jump	BWO BHS	BWO Switch Leg BHS	N/A	RO 2 BHS FWO RO 2 BHS
Level 3	Double Jump	Standing Three BHS	BHS Step Out BHS BHS	BHS BHS TT BHS BHS	RO BHS Tuck FWO RO BHS Tuck
Level 4	Double Jump	BHS to Tuck	BHS BHS Tuck	TT BHS Tuck	RO BHS Layout Whip Thru to Tuck or Lay
Level 5	Double Jump	Two BHS to Layout	BHS BHS whip BHS BHS Layout	TT Tuck	RO BHS Full Combo to Full
Notes					